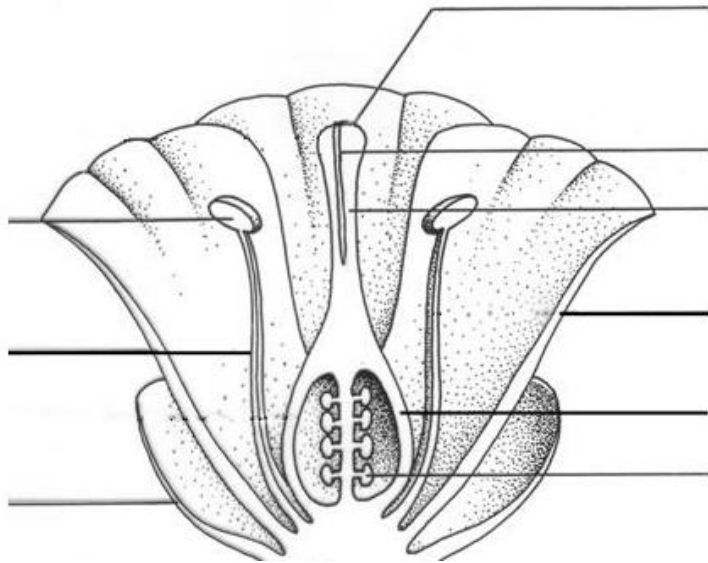


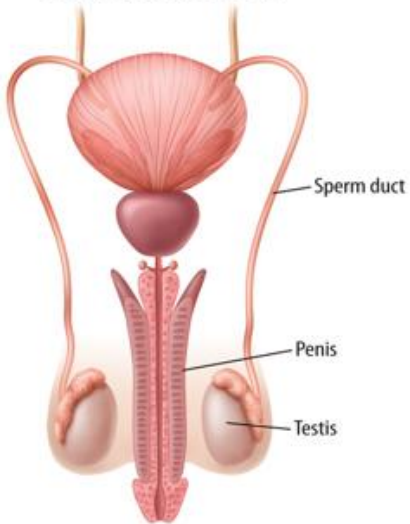
| | | | |
|-----------------|---|--------------|--|
| Topic | Sexual reproduction in plants | Level | GCSE (or any other course for students aged 11-16) |
| Outcomes | <ol style="list-style-type: none">1. Students can identify the male and female parts of a flower2. Students can state the function of the main parts of a flower3. Students can make connections between analogous organs involved in sexual reproduction in plants and humans. | | |

Do plants have sex?

Discuss in your groups



Male Reproductive System



Are any parts of the human reproductive system **analogous** to the parts of a flower? Label the diagrams above with the words below. Explain your choice.

Vagina

Egg cell

Testis

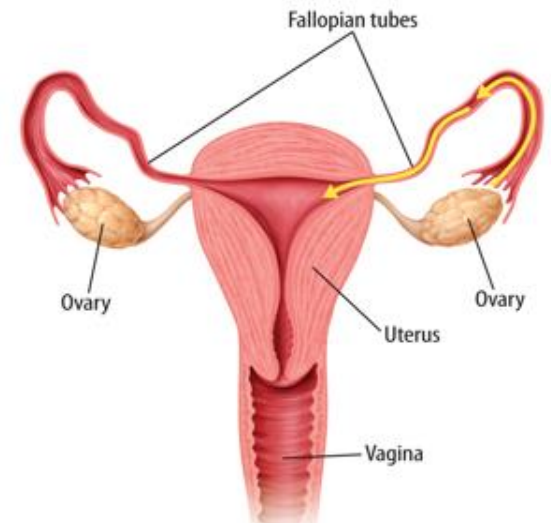
Penis

Uterus

Ovary

Sperm

Female Reproductive System



Questions to think about

1. How *could* a plant stop itself from having sex with itself?
2. What are the problems of a plant having sex with itself i.e. self-fertilisation?
3. Why don't humans produce 'seeds'.