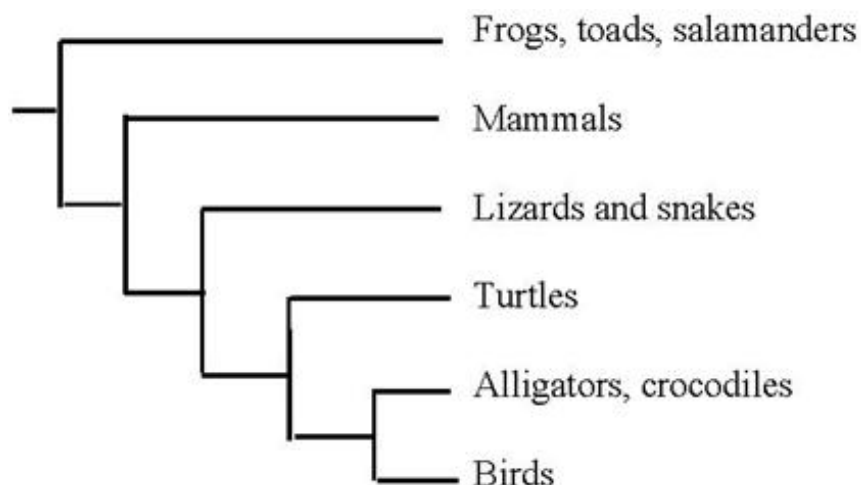


<b>Topic</b>	Evolution	<b>Level</b>	GCSE/A Level
<b>Outcomes</b>	1. To think deeply about the concept of evolution by natural selection		

### So you think you understand evolution?

1. Why have humans not evolved to breath underwater?
2. Did humans evolve from chimpanzees? If so, then why are chimpanzees still here?
3. Does natural selection differ from evolution or are they the same?
4. Are humans still evolving despite the NHS?
5. What evidence do we have that life evolved only once, and not many times independently?
6. Look at the phylogenetic tree below and answer the following questions:
  1. Are mammals more closely related to Lizards or Frogs?
  2. Are Birds less evolved than Mammals?
  3. Are Alligators more closely related to Birds or Turtles, or are they equally related to both?
  4. What do you think the common ancestor of Birds and Alligators would have looked like? Can you draw your 'hypothetical' ancestor?



**progress:** further resources on evolution are available here:  
<http://www.thescienceteacher.co.uk/evolution/>