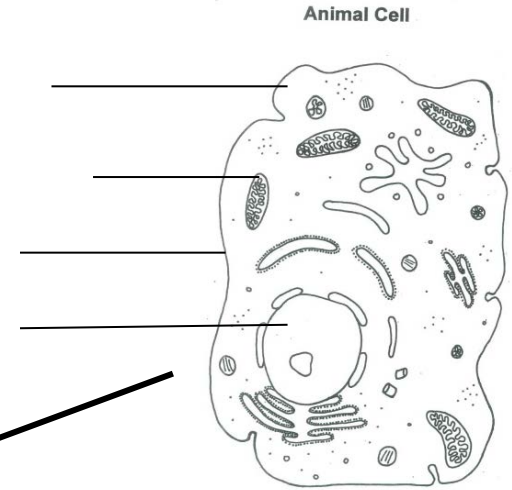
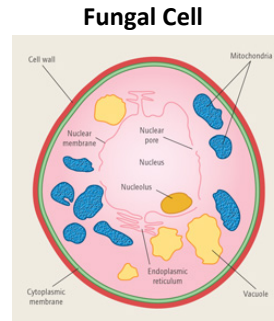
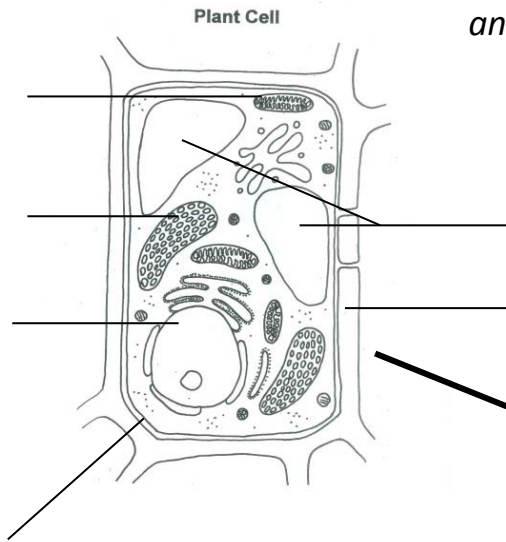


Topic	Animal, plant and fungal cells	Level	GCSE (or any other course for students aged 11-16)
Outcomes	<ol style="list-style-type: none">1. To label animal and plant cells2. To compare and contrast animal, plant and fungal cells3. To understand the concept of a common ancestor		

Plants, animals and fungi shared a common ancestor approx. 1,369 million years ago. What type of cells did their ancestor have?



Ancestral cell A (1,369 million years ago)

	Fungi (Y or N)	Plant (Y or N)	Animal (Y or N)	Cell A? (Y or N)
Chitin cell wall	Y			
Cellulose cell wall	N			
Cell membrane	Y			
Nucleus	Y			
DNA	Y			
Vacuole	Y			
Chloroplasts	N			
Mitochondria	Y			
Cytoplasm	Y			

Use this table to make a prediction of what cell A looked like.



Draw a labelled diagram to show what cell A could have looked like.

I think this because.....